



(水車類
AERATOR)

(水車類)
AERATOR

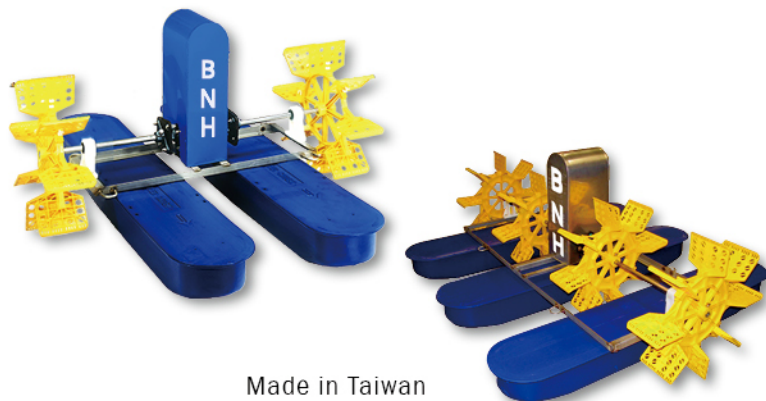




Paddle Wheel Aerator

BNH Paddle Wheel Aerator offer pond aeration for increase dissolve oxygen, surface aeration create water current for pond and other aeration purposes.

We do provide high quality of products with high efficiency of performance.



Made in Taiwan

◎ Characteristics

- Best Quality Silicon Steel Plate.
- Energy Saving.
- High Oxygenation Performance From Unique Design.
- Sturdy Stainless Steel Frame Ensure Without Any Deformation.
- Easy Maintenance.
- The Unique Aerator Electric Motor Made Under"ISO" System.

BNH Paddle Wheel Aerator with the following features

◎ Features

- High Quality of Electric Induction Motor (ISO Standard).
- Low Friction coefficient of Speed Reducer (ISO Standard).
- Strong and Durable Worm gear Design (CNS Standard).
- Smooth Rotation with low resistance to Output Shaft to decrease energy consumption.
- Professional designed paddle and best blade angle and substantial water splash and strong water.
- High performance Nylon Impeller.
- Replaceable Paddle and low maintenance cost.
- High Oxygenation performance.
- Made of Stainless 304 for the Framing materials and Shaft.
- HDPE Float and Highly Durable.

◎ Note

- Manufacturer preserves the rights to change specification without prior notice.

(水車類)
AERATOR



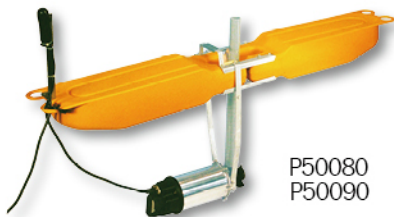


AQUACULTURE
FEED & EQUIPMENT

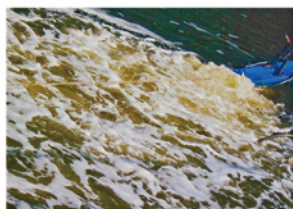
PRODUCT #
P50080
P50090

單相曝氣機水車 / 三相曝氣機水車

TPP-211 JET AERATOR YELLOW 1PH / TPP-231 JET AERATOR YELLOW 3PH

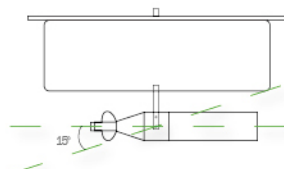


P50080
P50090



JET Aerator feature the compressed oxygenic with strong water flow & high air flow.

The aquaculture started from long time ago, but water oxygenation is the key to success or fail. At the present time, we can find several water oxygenic machines in the market, such like traditional paddle wheel aerator, or oxygenation by propeller. Because the technology before was not so developed that the traditional waterwheel been extensive used for water oxygenation. Regarding the technology developed day by day, new oxygenic machine also be presented continuously. The oxygenic machine we present is the most advanced, conveniently, energy-saving, high airflow, strong water flow. The newest enforcement compressed water-oxygenic machine, the enforced air-flow rate is 86m³/hour Max, water-flow=100m, is the best of oxygenic machine in the market, it also gets several patents in the world Aquaculture Market.



深度：水面起 25 - 35 cm (可調整)
DEPTH: FROM WATER 25-35 cm
(ADJUSTABLE)
角度：0° - 15°
ANGLE: 0° - 15°
最大送氣量：50m³/hr - 86m³/hr
MAX AIR FLOW: 50m³/hr - 86m³/hr

特點說明：

利用高推力之推進器，推動強力水流，造成吸氣箱內產生負壓，而虹吸大氣中之空氣再利用專利之強制內葉片將吸氣箱中之空氣增壓推出。

Feature:

Use the enforced driving force of patented propeller, driving a strong water-flow, absorb the air from air-tank inside, compress the air mixing with water, then push out.

產品名稱 規格

DIESEL ENGINE MULTI-IMPE PADDLE WHEEL AERATOR

產品編號	馬力	相位	電壓 / 頻率	軸封	O型環			小O環
Product #	HP	PHASE	V / HZ	SHAFT SEAL	O-RING			O-RING (S)
P50080	1.5	1	220 / 60	ED16-SIC	119.4*3.1	102.5*3	86.5*2	5-3-2012
P50090	3	3	220 / 60	ED16-SIC	119.4*3.1	102.5*3	86.5*2	5-3-2012

Note: All data subject to alteration without notice. (上述產品規格如有變動，恕不另行通知。)

(水車類
AERATOR)

(水車類)
AERATOR

